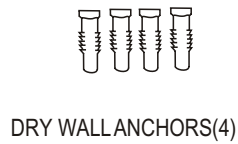
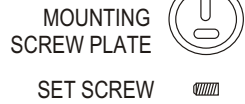
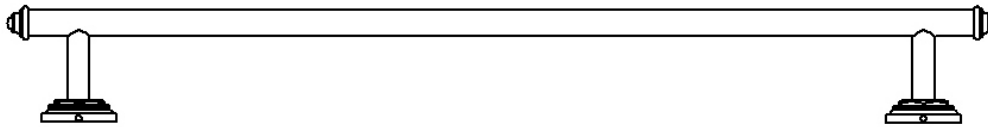
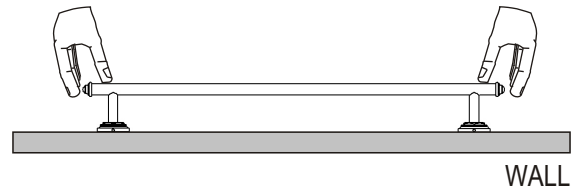


ESTATE SERIES LYRA COLLECTION TOWEL BAR

TOWEL BAR



- 1- Take the towel bar out of the box.
Place the posts against the assigned wall location.
Make sure the bar is leveled and the post positions are correct. Mark with pencil the post positions and remove the trims.



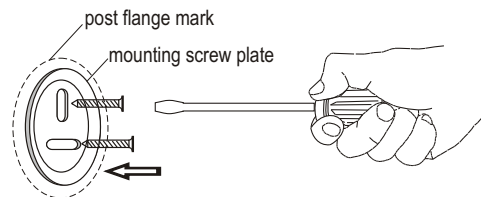
- 2- Using the Allen key provided, remove the mounting screw plates from the bar posts.

Press the mounting screw plate against bar post flange position on the wall and mark the screw hole positions.

2a- INSTALLING ON WOODEN SURFACE

- For wooden surface, the mounting screw plates can be secured by screwing the screws directly into the wall.

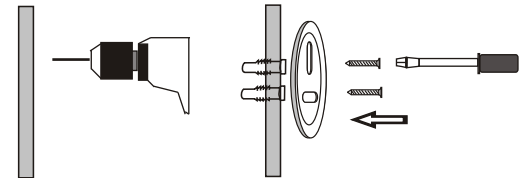
WOODEN SURFACE



2b- INSTALLING ON A DRYWALL

- Using a drill, pre-drill holes for the anchors.
- Insert the anchors into the wall.
- The mounting screw plate can be secured by screwing the screws into the anchors.

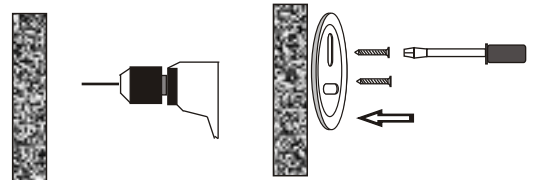
DRY WALL SURFACE



2c- IF INSTALLING ON A SOLID/HARD SURFACE

- Measure the dimensions carefully.
- Using a drill, pre-drill the holes.
- Secure the mounting screw plate by screwing the screws into the wall.

HARD SURFACE



- 3- Press the posts against the mounting screw plate. Align the posts and secure it by tightening the set screw.

- 4- Check both posts to make sure they are firmly secured. If not, tighten the set screws with the Allen key.

